



AeroTrac *Premium Plus*

V2.40 Upgrade Features

What is AeroTrac Premium Plus?

AeroTrac V2.40 - otherwise known as AeroTrac Premium Plus — is the latest generation of AeroTrac software. It is designed to meet the needs of medium-sized businesses and small corporate operations. In comparison to AeroTrac V2.30 the new version offers improved functionality, security, speed, scalability and support. As with previous AeroTrac upgrades, the functionality and data from the original version is unchanged and intact.

Main Features:

Administration, Security & Control:

- Improved Security & Control via a separate Administrator application
- Improved User Set-up and Permission Control
- Improved look and feel
- Improved control on creation of static data

Commercial & Finance

- Substitute commercial documents such as Sales / Project Invoices, Estimates & P.O's with customised reports.
- Improved API links to financial accounting solutions

New Optional Modules:

- Reliability Reporting
- Contract Management / EVA / WBS
- Quality (Under development)
- Crystal Reports Integration
- Planning Manager
- Warranty Management

Technical / Production:

- A new Aircraft System of Maintenance feature suitable for the control of larger aircraft
- Enhanced Part Master control
- Improved Part-Lifing Criteria
- Improved Planning / Scheduling
- Improved Management capabilities
- Reliability Reporting
- Improved Publications management
- Enhanced Component Log
- Improved aircraft maintenance forecasting
- Improved Inspection Workbench functions

Inventory:

- Improved Inventory Control,
- Enhanced Status Board functionality
- Improved Material Planning functions
- Advanced Purchase Order functions
- Improved Bill of Materials functions
- Improved vendor management functions
- Processing of warranty claims

Benefits

Increase Profits <p>AeroTrac will improve almost every aspect of your MRO business, providing data to analyse your KPI's, take measures to reduce costs, increase margins, improve performance and save both money and time. The software will pay for itself.</p>	Easy To Use <p>AeroTrac functionality follows intuitive steps, so that complex MRO processes can be handled succinctly and accurately. Screens have a consistent layout, so users quickly learn and adapt. Each screen mirrors the processes within the business, ensuring discipline, clarity and control.</p>	Data You Can Trust <p>AeroTrac is exceptionally robust and stable. Controlled data input results in reliable output. System defaults control the integrity of data that is entered, ensuring that vital information is not missed, thereby reducing the possibility of costly errors and improving Quality.</p>
Greater Speed & Security <p>Extensive drill-down functionality, single point of entry for most data, user friendly screens, and automated functions all contribute to rapid accomplishment of day-to-day tasks. Administrator defined control of screen access ensures security and accuracy of data.</p>	Outstanding Support <p>AeroTrac is delivered with total commitment from TracWare to make the software work for you. We bend over backwards to ensure that our software meets your demands, and that you know how to get the best out of it. We understand that your Success will be our success also.</p>	Improve Performance <p>AeroTrac is a tool to help you to perform a multitude of laborious tasks simply and accurately. Enhanced visibility of technical, commercial, financial and logistical information improves communication, planning and decision-making, thus improving accuracy, speed and quality</p>
Return on Investment <p>AeroTrac offers you the opportunity to make a rapid return on your investment. The enhanced functions and improved visibility reduce duplication, and increase the speed at which accurate data can be collected and utilised. AeroTrac allows you the opportunity to confidently expand your business into new areas.</p>	Commercial Benefits <p>Access the data you need to identify the strengths and weaknesses within your business. Improve turn-time performance, provide better service-levels, reduce costs, increase profit margins, enhance customer communications, reduce disputed invoices and improve cash-flow.</p>	Value for Money <p>AeroTrac offers an unrivalled level of functionality at an affordable price, with no hidden costs. After-sales service levels are second to none; and Support Contracts provide genuine peace of mind. This all adds up to a package that offers unbeatable Value for Money.</p>

Administration

Administration is controlled through a separate application. Features and benefits include:

- Improved Security & Control – users who have no Administrator access rights cannot access the Admin Module.
- Improved User Set-up and Permission Control down to tab level on Part Master, Customer & Supplier Details, Purchase & Repair Order and others
- Modules and screens which users have no access to are now hidden on the Main Menu, simplifying the application
- Improved control on creation of static data (replacement of free-entry asterisk boxes)
- Extra Additional Variables in Company Setup compared to v.2.30 for improved flexibility.

The screenshot displays the AeroTrac Administrator Module interface. The top bar shows the application name and version (AeroTrac Premium Plus - Tracware, Wednesday 01-Aug-2012 (Week 32)), along with 'Log Off' and 'Quit' buttons. The left sidebar contains a tree view for 'Aviation MRO Services Ltd' with categories like Administrator, Commercial, Finance, Materials, MRO, Personnel, and Shippin. The main area shows the 'User Permissions' configuration window for the role 'Administrator 2.40'. This window includes a table of permissions for various screens and a 'Save or Cancel' button.

Screen	View	Add	Edit	Delete	Authorize	Post	Other	Updated By	Updated
MRO - Setup Maint. Frequencies	Yes	Yes	Yes	Yes				Tracware	08-Aug-2012
MRO - Setup Maintenance Descriptions	Yes	Yes	Yes	Yes				Tracware	08-Aug-2012
MRO - Setup Maintaining Assets	Yes	Yes	Yes	Yes				Tracware	08-Aug-2012
MRO - Setup Positions	Yes	Yes	Yes	Yes				Tracware	08-Aug-2012
MRO - Setup Product Groups	Yes	Yes	Yes	Yes				Tracware	08-Aug-2012
MRO - Setup Repair Schemes	Yes	Yes	Yes	Yes				Tracware	08-Aug-2012
MRO - Setup Review Groups	Yes	Yes	Yes	Yes				Tracware	08-Aug-2012
MRO - Setup Task Descriptions	Yes	Yes	Yes	Yes				Tracware	08-Aug-2012
MRO - Setup Test Types	Yes	Yes	Yes	Yes				Tracware	08-Aug-2012
MRO - Setup Warranty Types	Yes	Yes	Yes	Yes				Tracware	08-Aug-2012
MRO - Setup Workscopes	Yes	Yes	Yes	Yes				Tracware	08-Aug-2012
MRO Setup	Yes	Yes	Yes	Yes	Yes	Yes		Tracware	08-Aug-2012
Parts Setup	Yes	Yes	Yes	Yes	Yes	Yes		Tracware	08-Aug-2012
Period Details	Yes	Yes	Yes	Yes	Yes	Yes		Tracware	08-Aug-2012
Permissions	Yes	Yes	Yes	Yes	Yes	Yes		Tracware	08-Aug-2012
Personnel - Setup Departments	Yes	Yes	Yes					Tracware	08-Aug-2012
Personnel - Setup Employee Groups	Yes	Yes	Yes					Tracware	08-Aug-2012
Personnel - Setup Labour Rates	Yes	Yes	Yes					Tracware	08-Aug-2012
Personnel - Setup Non Productive Codes	Yes	Yes	Yes					Tracware	08-Aug-2012
Personnel - Setup Over Time Rates	Yes	Yes	Yes					Tracware	08-Aug-2012

The screenshot shows the 'Company Setup' window with the 'Additional Variables' tab selected. It displays a table of variables and their values.

Variable Name	Variable Value
Account Limit Exceeded Hold	Yes
Accounts Ledger Code Mapping	No
Allow Batch WO Cost Update	Yes
Allow Journaling Journals	No
Apply WO Costs To Project	No
Bal Account For MYDB Accounts	[variable not set]
Bank Code Label	Bank Sort Code
Contract For Stock	[variable not set]
Contract Management	No
Contract Mandatory	No
Create PE Summary	Yes
CUH Linked Doc Path	[variable not set]

Enhancements to Existing Functionality

A series of changes have been made to some of the existing functionality, including the following:

General Improvements: The whole visual experience of V.2.40 is an improvement.

- Removal of all the 'Static' data such as the 'Set-up' screens into the new Administrator Module has simplified the main application as well as significantly increasing data security.
- User access is managed to a far more specific level of control, and if a user does not have access rights to a particular module or screen it will not appear in the menu. The 'no entry' symbols have gone and irrelevant modules and features disappear, thus greatly simplifying the screens and making the software easier to use.
- The free-entry text asterisk boxes have been replaced by set-up screens, so that the entry of data such as countries, customer / supplier types, regions, test types etc is now subject to greater scrutiny and control.

Part Master: Some minor changes have been made to the Part Master:

- The screen has been simplified, displaying existing fields under more appropriate tabs.
- New fields have been added so that separate classifications can be ascribed to Tools, GSE & Modifications.
- A new pop-up message option has been added to appear during Batch Generation.
- An option has been added to determine whether reworkable parts appear on the Company's Capability List.
- Further options are to be made available for the improved control of 'Chaotic' Life-Limited Components.

Status Board: Some improvements and additions have been made to the Status Board:

- Demand Tab: AOG requirements appear in Red font
- Demand Tab & Availability: improved filtering capabilities for easier analysis
- Inspect Tab: accepts notifications of Workshop Projects that have no material or rework requirements
- New Tab: Estimates — indicating when a Project is ready for estimate to be raised / or has been approved

Inspection Workbench: Some additional controls have been added to improve the flow of processes

- Coupled with the 'Approval' tick box is the ability to flag a project as having no material / rework requirements.
- Coupled with the 'Approval' tick box is the ability to enforce a mandatory 'Workshop Report' .
- An option to determine which tab the IWB opens with, i.e. 'Embodied', Removed / Required, or 'Inspect / Rework'.

Enhancements to Existing Functionality

Purchase Order Processing & material management: Several improvements and additions have been made to the Purchase Order Processing and Material Review routines:

- A new 'Miscellaneous' tab has been added to all Purchase & Repair Order types. This tab allows the addition to a purchase order of additional services (such as a known freight cost, AOG charge, Minimum Order Charge etc) without the need to use a generic Part Master. This includes 'Service Orders' and all Process / Repair Orders. The only exception is drop-ship orders.
- The 'Miscellaneous' tab is also used for the processing of Core Charges on exchange Purchase Orders.
- In common with Service Orders, all purchases made on the new Misc Tab can be linked to a Project, Sales Order or Works Order for automatic inclusion into WiP and addition to a Sales / Project Invoice on the Misc Costs tab.
- New Banners warn of actions required to be carried out, such as 'Core Issues'
- The Material Review has improved control over the importing of parts and export of data to estimates, with the ability to import records of Workshop Projects with no material / rework requirements.
- A new 'Consumables' tab on the Material Review will import Non-Stock Part Master records entered on the Inspection Workbench 'Consumables Tab'. This is particularly useful for reflecting the use of non-stock consumables on the shop-floor and for ensuring they are re-charged.
- Stock Adjustments have been segregated into several menu options to improve control and access rights. The Stock Adjustments menu is now purely for adjusting stock in and out. A new 'Part Movements' menu option has been created for Core Receipts & Issues, Robberies and Route to COMAT. Stock Transfers for warehouse to warehouse movements and Warranty Adjustments also have their own separate menu options.

Finance & Commercial: V.2.40 has the same comprehensive financial controls of v.2.30 with a few additional options:

- AeroTrac provides a generic interface utility to allow the automated transfer of financial data to any compatible accounting solution on a 'real-time' basis. The accounting solution will require it's own API (provided by the reseller) which can be configured to suit the requirements of both applications using 'Ledger Code Mapping'.
- The ability to use daily 'Spot Rates' for currency exchange rates. Purchase, Sales and Nominal Ledger transactions can be processed based on an exchange rates set for the day. Spot Rates can be added manually or via a link to a table using the generic interface.

New Modules & Features - Warranty

The Warranty Module is a new Release for 2012. It forms part of the Quality Module and integrates with the existing functionality of v.2.40 but is a self contained application. The module manages the commercial and financial aspects of all types of warranty claims.

Features:

- Create default service warranty times offered to customers (Days, Hours, Cycles) for parts in the Part Master
- Define warranty-life of all purchased parts from OEM's & Suppliers (Purchasing Defaults)
- Define warranty-life of aircraft in Fleet Details
- AeroTrac produces warnings for parts that may be subject to warranty claims
- Process customer warranty claims for both labour & materials for warrantable work (Workshop or Hangar) including the ability to segregate charges that are chargeable
- Process warranty claims against vendors or the OEM for defective parts and services either for yourself or on behalf of a customer
- Manage warranty on an aircraft and its components owned by a third-party customer or as part of your fleet

Warranty Manager Main Menu - AeroTrac Premium Plus

AeroTrac Premium +™
Warranty Management

AeroTrac Premium Plus : Tracware
Friday 10-Aug-2012 (Week 32)

Log Off Quit

Aviation MRO Services Ltd

- Warranty Setup
- Warranty Management
 - Aircraft Warranty Detail
 - Claim Details
 - Warranty Details
 - Warranty Not Processed
- Reports

www.tracware.co.uk

Workshop Projects

Select Project: W010085 ? For Stock: Live: Customer: All:

Customer Repair Workshop Details Save or Cancel Exit

Header Details | Project Values, Sub Projects & Histories | Despatch & Comments | Hold Details | Project Status | Marshalling | Diary | Auto Close

Project Details

Project No: W010085 Issue No: 1 Unit Received:

Date Raised: 10-Aug-2012 Tracware Arrival: Not Planned

Department:

Warehouse: Hangar 1 - Fixed Wing Hangar 1 - Fixed Wing

Customer: The Big Cargo Jet Company Workshop Report Req'd:

Contact: Eduardo Colombo Log Book/Cards Req'd:

Customer Ref: WAR001 ADG:

Date Req'd: 31-Aug-2012 Hold Process Pack at Costing:

Release Type: EASA PBH:

Part Received: 3045802-01 Pump, Fuel, Bendix Avelex 025323 series

Part Released: 3045802-01 Pump, Fuel, Bendix Avelex 025323 series

Serial No: SIN225 Qty: 1

Rework Group: Component PT6

Analysis Code:

Project Title: Sent for Warranty Investigation - Erratic Idle at Low NG

Workscope: Repair Engineer's Report:

Within Warranty Field Trip:

Project Status

Live: Cancelled: Closed:

Stock Project:

Exchange:

Rental:

Schedule Profile: 1

Pack Printed:

Released to W/shop:

Removal Details

Removed From:

Serial No:

Reg No:

Position:

Add New Project Edit Project Hold Project Close/Cancel Project Reschedule Project Acknowledge By Email Print Job Label Preview Project Print Project

New Modules & Features - Warranty

Features:

View all items that are subject to warranty within AeroTrac including:

- Aircraft & Components
- Parts in Stock
- Parts on Order
- Parts at Repair
- Parts repaired in-house
- Parts Issued
- Parts on order as part of a warranty claim.

Other features:

- Submit and expedite claims: record details of correspondence in a dedicated diary.
- Claim for replacement parts and labour
- Link warranty claims against vendors to warranty projects and Sales Orders
- Automated control of financial ledger transactions
- Auditable transfer of the cost of parts issued to a Warranty Project or Sales Order to warranty parts supplied free of charge by a vendor (for accurate stock valuation and CoS) .

Warranty Details

Filter Part: ? Show All Parts: Warehouse: All Refresh Data Exit

Parts In Stock Service Warranty | Parts On Order Covered by Warranty Fleet Aircraft | Parts at Repair Replacement Parts (Linked Claims) | Parts Issued

Project No	Part No	Description	Customer	Date Raised	Date Comp
HP10087	Citation Excel	Aircraft, Citation 560XL	The Big Executive Jet Company	21-Mar-2012	
HP10088	Citation Excel	Aircraft, Citation 560XL	The Big Executive Jet Company	18-Apr-2012	
HP10089	Citation Excel	Aircraft, Citation 560XL	The Big Executive Jet Company	19-Apr-2012	
HP10090	Citation Excel	Aircraft, Citation 560XL	The Big Executive Jet Company	23-Apr-2012	
HP10091	Citation Excel	Aircraft, Citation 560XL	The Big Executive Jet Company	24-Apr-2012	
HP10096	Citation Excel	Aircraft, Citation 560XL	The Big Executive Jet Company	28-Jun-2012	
HP10098	Citation Excel	Aircraft, Citation 560XL	The Big Executive Jet Company	25-Jul-2012	
HP10099	Citation Excel	Aircraft, Citation 560XL	The Big Executive Jet Company	25-Jul-2012	

Claim Details

Category: Workshop Projects Claim No: ? Closed Open Service Warranty Save or Cancel Exit

Header Details | Project Details | Project History | Diary

Our Claim Ref: Issue No: 01 Pending

Category: Workshop Project

Customer: The Big Cargo Jet Company

Cust. Contact: Edwardo Colombo Tel: +961 234 5675432

Email: E.d.colombo@bcj.co.ma

Warranty Claim Type: Service (Workshop)

Resolution Req'd: Replace Item: Repair Item: Credit Note: Other:

Warranty Action: Parts Affected: Operational Problem: Engineer Visit Req'd: Replace Item: Repair Item: Credit Note: Return Core: Scrap On Site: CID (Customer Induced Damage):

RMA No.:

Warranty On: Aviation MRD Services Ltd

Third Party Claim No:

Third Party Claim Date:

Date of Occurrence: 31-Jul-2012

Linked Claim No: View

Claim Overview:

Date Raised: 10-Aug-2012 Tracware

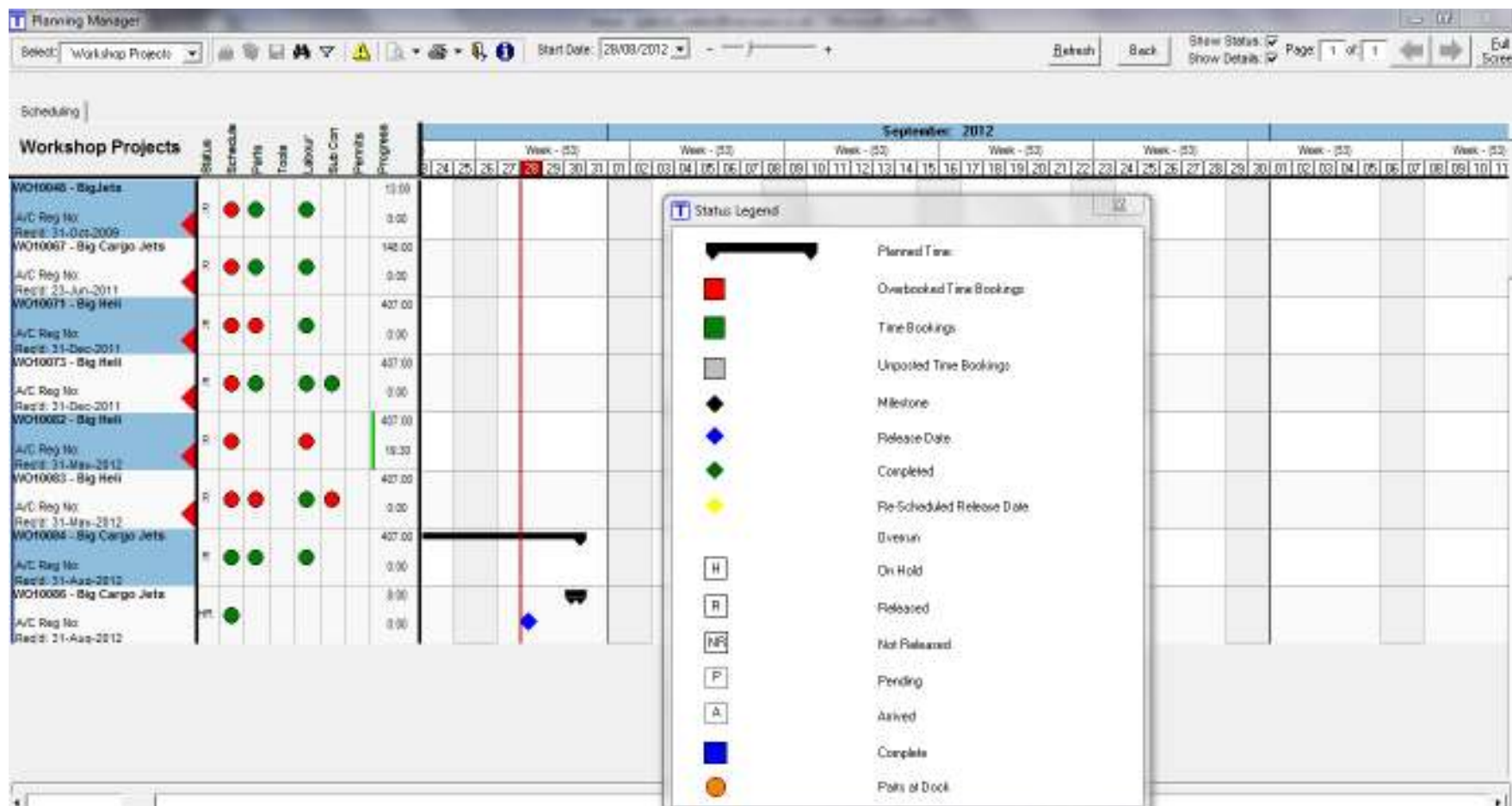
Last Updated:

Internal Note:

Add New Claim Edit Claim Claim Status Linked Claim Number Parts Covered by Warranty Email Claim Preview Warranty Print Warranty

New Modules & Features - Planning Manager

The Planning Manager Module is a new Release for 2012. It forms part of the Scheduling Module and integrates with the existing functionality of v.2.40 but is a self contained application. The module is an advanced planning tool for improved information and control over the current status of WiP and planned requirements.



New Modules & Features - Planning Manager

Features:

- View progress on Workshop Projects, Hangar Projects and Manufacturing Work Orders.
- View and plan for scheduled inputs based on Planned Arrivals
- View scheduled aircraft maintenance events based either on average flight hours or scheduled flights.
- 'Traffic-Light' indicators to highlight the status of work
- Drill-down functionality to view materials, sub-con, labour-bookings
- Drag & Drop options to re-schedule Work In Progress.

Options

Sort By: Sort by 'Date Required'

Order No: (All)

Type: (All)

Suggested Release: Clear Week No: 36

Option: (All)

Warehouse/Base: (All)

Product Group: (All)

Owner: (All)

@ Work Centre: (All)

Marshalling: (All)

Contract: (All)

Project No: (All)

Recs Per Page: 10

Span: 30 Months

Reset All Cancel OK

Project No: WO10063

Parts: Labour | Sub-Con | ECN |

Replacement Parts

Part No	Description	Qty Req'd	Qty Picked	Qty Alloc.	Free Stock	Total Stock	On Order	Oldest Order *	@ Dock	Stock Type	Stock Type	Suppress De
3039951-CL	Dirv	1	0	0	0	0	0		0	MR10076	(02)CHC	N/A
3019909	Nut	4	0	4	3	7	0		0	MR10076	(01)New	N/A
513066-01	Nut, Lock	2	0	2	2	4	0		0	MR10076	(01)New	N/A
A53209-011	Packing	2	0	2	3998	3600	0		0	MR10076	(01)New	N/A
3117944-01	Screen, Air Inlet	1	0	0	0	0	0		0	MR10076	(01)New	N/A
M530775-01	Seal	1	0	1	8	9	0		0	MR10076	(01)New	N/A
3016998	Washer	4	0	4	2	6	0		0	MR10076	(01)New	N/A

* Oldest Order (Specific Demand)

Required For - 1 Items

Order No	Date Req'd	State	Req'd	Alloc	Pick	A/C Req	Last Updated By
WO10063	31-Apr-2012	Each	1	0	0		Tracewise

Alternatives

Order No	Free Stock	State	Req'd	Alloc

Demand Fulfillment - 1

Order No	Date Due	Qty	Type	Status	Order Raised By
RO10036	05-Mar-2009	1"	R/O		Tracewise

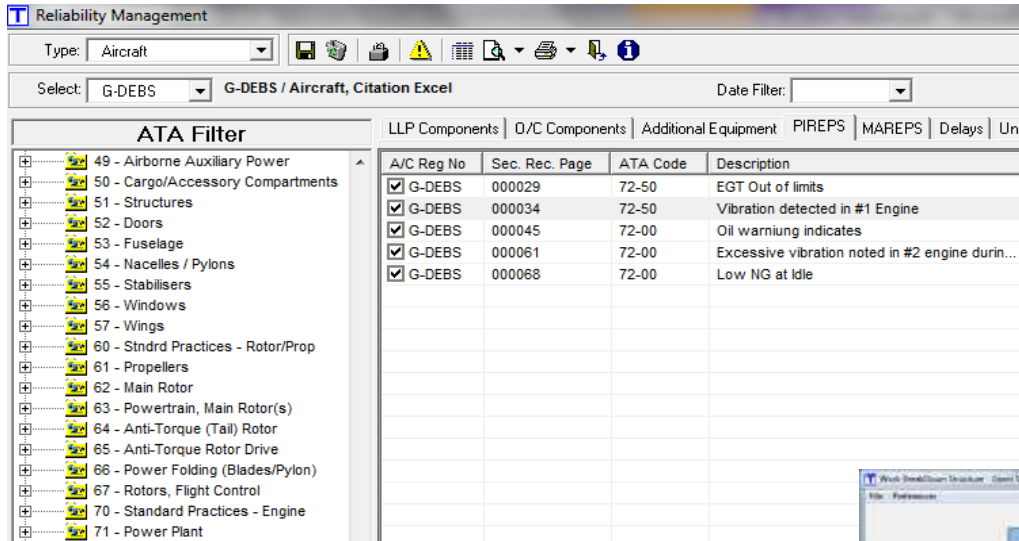
Shortages: Ordered: Received: Show Group:

Partial Pick: Stock Available Issued: Delivered: Show Group: Hide All:

Additional Functionality - Other

Need More? Upgrade to Premium Plus!

Premium Plus offers enhanced functions and additional modules designed to manage some of the more specialised processes in Aviation MRO.

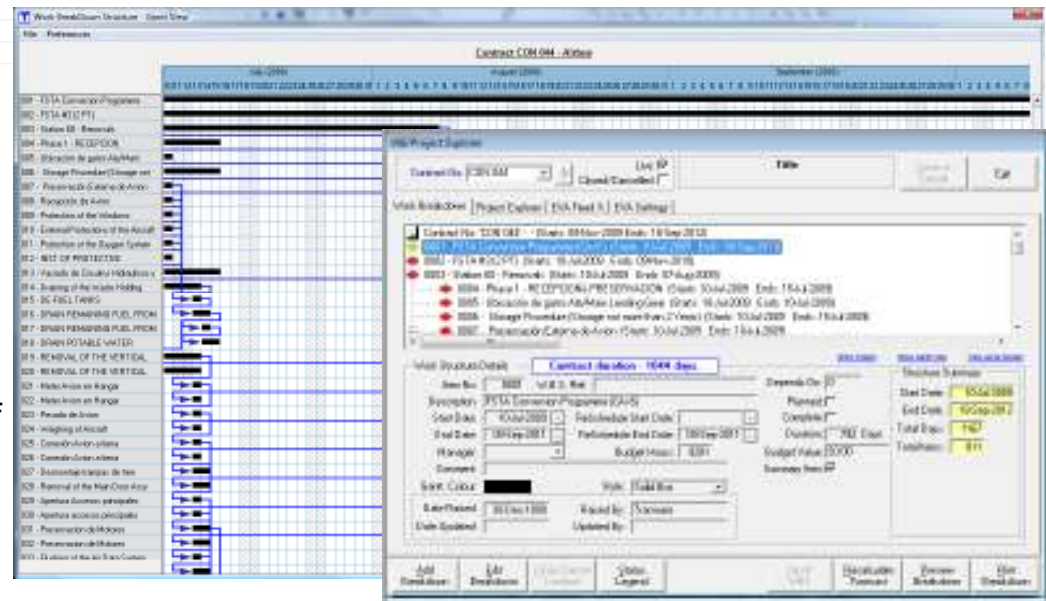


Reliability Module (above) :

An integrated module which identifies aircraft / parts reliability. Using data from the main AeroTrac application, the Reliability Module measures mean-times between failure and unscheduled removals, using a range of criteria from part numbers to ATA coding. The Reliability Module helps flight-based maintenance organisations measure and review the effectiveness of their maintenance schedules and can be used as a tool to support trend analysis. Options for Workshop Project trend monitoring are also under consideration.

Contract Management Module:

An integrated module which provides detailed reporting of costs generated against a single contract or series of contracts. Create contracts, set budgets and then group costs collected from Sales Orders, Works Orders, Hangar Projects and Workshop Projects to provide detailed analysis of the overall progress and results. Contract Manager includes an integrated Work Breakdown Structure, and a separate 'Earned Value Analysis' utility.





**If you would like a demonstration of AeroTrac Premium Plus
please do not hesitate to contact us**

Thank You